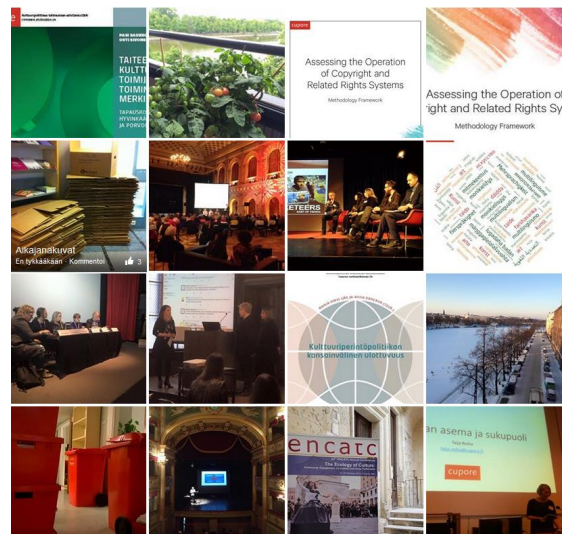




CENTER FOR CULTURAL POLICY RESEARCH

www.cupore.fi

Cupore is a forum for discussion and debate on cultural policy issues both in Finland and internationally. Cupore not only supports and carries out research and development work but also monitors and assesses information from reliable sources, processes that information and transmits it to the relevant bodies and organisations.



The Foundation for Cultural Policy Research was founded in 2002 on the initiative of the University of Jyväskylä and the Finnish Cultural Foundation. The Ministry of Education and Culture was one of the initiators behind the establishment of the Foundation and is responsible for the financing of its research projects. The purpose of the research center is to monitor developments in both Finnish and international cultural policy and to promote research in the field. CUPORE's mandate includes the production and dissemination of reliable information applicable to cultural policy decision making and the promotion of important research and expert opinion by way of research projects and training in the field.

Cultural diversity is the guiding principle behind all these activities, i.e. the analysis and assessment of the preconditions involved in creating cultural diversity as well as those limiting it at both the national and international level.

CUPORE maintains a network of relations with research centres, universities and scientific and professional organizations at home and abroad. CUPORE also organises conferences and brain-storming sessions together with its partners. Cupore is one of the publishers of the Nordic journal of cultural policy, *Nordisk Kulturpolitisk Tidskrift*.